

# 2024 Updates & Highlights

**"Our organization and land trusts across the state rely on CLCC for the leadership, advocacy, and funding necessary to accelerate the pace of conservation and protect the lands and waters essential for future generations."**

– Catherine Rawson, Executive Director  
Northwest Connecticut Land Conservancy



# Scaling New Heights: The Power of Teamwork in Land Conservation

Tree climbing wasn't on the agenda for CLCC's recent strategic planning retreat, but it was a challenge that I couldn't resist.

We arrived at a landmark red oak while taking a midday hike at the Winchester Land Trust's (WLT) Rosgen Woods. Guided by Jen Perga, WLT President, and Shelley Harms, a statewide land trust consultant, the CLCC team had the opportunity to see first-hand one of WLT's most recent acquisitions. We explored the trails, woods, and waterways, enjoyed the diverse birdlife, and admired the land trust's impressive trail building.

As we rounded a corner, the "Great Red Oak" came into view. When someone challenged me to climb it, I (impulsively) agreed, sparking an impromptu team-building exercise. With each step up the tree and each step back down, my CLCC colleagues assisted me, reminding me of the collaborative relationships essential to everything we do.

Reflecting on the drive home, I thought about the many facets of teamwork that make our land conservation work possible. Our board and staff bring energy, fresh perspectives, and camaraderie to our programs, making each day a joy. Our partnerships with land trusts, volunteers, and professionals—like Jen and Shelley—demonstrate boundless dedication, skill, and firm resolve, making the conservation of properties like Rosgen Woods possible and providing the public with invaluable experiences in nature.

Fostering relationships is essential in working with landowners who choose conservation, ensuring their land is stewarded in accordance with their wishes and protected as a necessity for future generations. Our partnership with advocates, legislators, and agency colleagues is crucial in prioritizing land conservation policy at every level, emphasizing its critical role in addressing climate change, protecting biodiversity, and strengthening our economy. Building trust with community partners is key to diversifying the network of people engaged in conservation efforts.

You play a critical role in all facets of this teamwork. Your belief in the power of nature and your commitment to ensuring it remains available for generations to come are the foundation of our success. Your partnership with CLCC helps us achieve our mission to elevate and strengthen land conservation throughout the state and contributes to our shared vision of a greener, more sustainable future.

Thank you for inspiring us every day and reminding us that teamwork extends far beyond our office and into the wider community we serve.

Warm regards

[Amy Blaymore Paterson](#)  
Executive Director



**With each step up the tree and each step back down, my CLCC colleagues assisted me, reminding me of the collaborative relationships essential to everything we do.**

# Progress Towards a Strategic Vision

In a world where environmental challenges are ever-evolving, CLCC remains steadfast in its mission to elevate and strengthen land conservation in Connecticut.

Land trusts across the state are essential in protecting the vital lands that clean our air and water, feed our communities, and offer us solace.

From our forests and wetlands to the mosaic of agricultural landscapes across our urban and rural space, protecting these lands is our responsibility to future generations. Your partnership has enabled us to make significant strides towards the goals outlined in our 2023-2027 Strategic Plan—and stories of this progress are shared in the following pages.

This year, we've again organized this report into five sections, each reflecting a strategic goal:

- 1 Dramatically increase the pace and amount of land protected in Connecticut**
- 2 Build a strong, sustainable land conservation community with capacity to permanently conserve and steward natural and working lands**
- 3 Enhance permanence of protected lands**
- 4 Integrate diversity, equity, inclusivity, and environmental justice into all aspects of land conservation**
- 5 Strengthen CLCC's organizational capacity and sustainability to lead the land conservation community in Connecticut**

Our commitment is unwavering, and the progress detailed in this report is a testament to the collective effort of our community, donors, and partners.

Thanks to your generous support, we are creating a future where ecosystems flourish, communities are resilient, and our natural environment is conserved for all to enjoy. Together, we are making a lasting impact.

***Thank you for being a crucial part of this journey.***



## Celebrating Excellence in Conservation

Throughout this report we are delighted to feature CLCC's 2024 Excellence in Conservation Award honorees, recognized for their significant contributions to the ongoing success of land conservation in our state. Read more about them at [ctconservation.org](https://ctconservation.org)

# GOAL 1

## Dramatically increase the pace and amount of land protected in Connecticut



Deborah Jones

### 2024 Katchen Coley Award for Excellence in Conservation — Barton Jones

The Katchen Coley Award for Excellence in Conservation honors Katchen Coley (1924-2013), a dedicated CLCC Steering Committee member and environmental activist. This award recognizes an individual who embodies Katchen's spirit of land conservation through long-term volunteer service, inspiring others to passionately advocate for community causes.

**"Conservation is key to the survival of our planet and its support for life. I am proud to be part of an outstanding team acting locally to meet a global challenge."**

- Barton Jones, President, Cornwall Conservation Trust



# Empowering Land Trusts to Conserve the Places We Love

Conserving land requires resources, and land trusts often need help to secure the funding necessary to bring to fruition their conservation goals. Due diligence costs for appraisals, title searches, and surveys can hinder conservation efforts before they begin.

CLCC understands these funding needs and remains steadfast in our commitment to empowering land trusts.

Through our Transaction Assistance Grant (TAG) Program, we have awarded more than \$283,000 to 35 land trusts, helping to conserve ~2,745 acres across Connecticut.

## Recent Awardees



**New Hartford Land Trust**

**\$15,000**

Survey



**Clinton Land Conservation Trust**

**\$10,000**

Title Search +  
Environmental  
Assessment +  
Survey



**North Haven Land Trust**

**\$4,250**

Survey +  
Recording Fees



**Wolcott Land Conservation Trust**

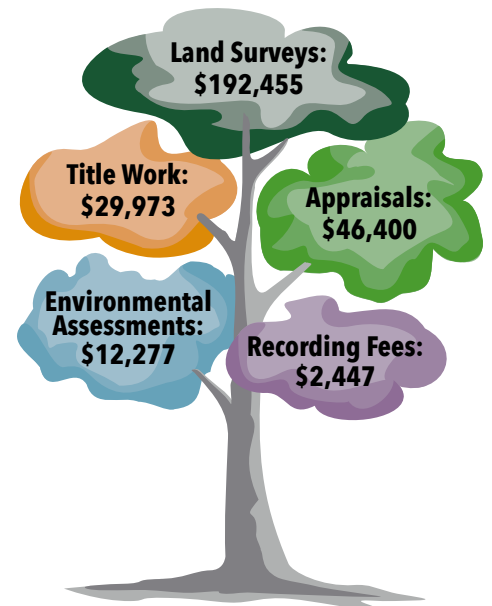
**\$4,000**

Appraisal

Further, through our Connecticut Conservation Partnership Program (CCPP), we are directing \$6.7 million in federal funding toward land conservation efforts, bridging fundraising gaps, and accelerating the pace of conservation across the state.

In partnership with five land trusts, we will conserve ~990 acres, safeguarding wetlands, forests, and critical wildlife habitat while also promoting recreation and outdoor education.

## Awarded Transaction Expenses



**“CLCC’s support was critical in enabling our small land trust to successfully apply for state open space funding.**

**New Hartford Land Trust is now moving toward preserving a significant parcel within an under-protected core forest block that helps protect a key drinking water resource.”**

**– Madeline McClave**  
President, New Hartford Land Trust

# GOAL 1

## Advocacy and Conservation Policy

### Leadership in Conservation Policy

CLCC ensures land conservation is a priority and that state funding is accessible to a wider range of applicants, allowing for greater conservation impact across the state.

Through **leadership on the State Natural Heritage, Open Space, and Watershed Land Acquisition Advisory Board**, chaired by CLCC's Executive Director, Amy Blaymore Paterson, we successfully advocated for legislative amendments that expand eligibility for environmental justice communities, provide broader access to the funding for non-profit organizations, and increase financial support for land conservation projects.

Yaw Owusu Darko, CLCC's Senior Project Specialist, chairs the **Land Subcommittee of the Connecticut Equity and Environmental Justice Advisory Council (CEEJAC)**, where he works closely with DEEP to advance environmental justice initiatives. Under his leadership, CLCC has collaborated with DEEP to propose key administrative changes to the OSPA and UGCG application processes, reducing barriers for urban communities and expanding opportunities for open space protection in underserved areas.

Leading through these critical initiatives, we are not only conserving land but also fostering a legacy of equitable access to the natural environment for generations to come.



# Reflecting on the 2024 Legislative Session: Moving Forward to Protect Nature

The 2024 legislative session brought a mix of challenges and quiet victories, reminding us that the road to progress is often long and difficult. But through it all, the dedication of land trusts and community members across Connecticut was unwavering.

A big disappointment was the legislature's failure to pass key climate legislation. These bills, which included CLCC's priority to make nature-based solutions a part of the state's plan to fight climate change, were left to die in the Senate.

This was a frustrating outcome, especially considering the strong public support for action to address the worsening climate crisis and the loss of biodiversity. The inaction sent a discouraging message, particularly to the younger generation, who are looking for bold steps to protect their future.

Despite these setbacks, we should not overlook the progress we made. We successfully advocated for millions in grant funding for land conservation, trails, and resilience programs, and helped to defeat a proposal to convey state park land. We also stopped proposals that would have weakened protections for inland wetlands and reduced the public's ability to participate in local environmental decisions.

Plans to officially adopt nature-based solutions as state policy are gaining support among legislators and within DEEP. This progress sets the stage for future legislative and administrative action that could bring real change.

Persistence is key. While we didn't achieve everything we hoped for this year, the groundwork has been laid for future success. Together, we will continue to push forward, knowing that every small victory brings us closer to our goals.

## What Are Nature-Based Solutions?

Nature-based solutions, such as forests and trees, wetlands, riparian buffers, and healthy organic soils, are essential in combating climate change and biodiversity loss.

As a conservation leader at the Capitol, CLCC strongly advocates for prioritizing nature-based solutions in state policy, emphasizing their myriad benefits to public health, the economy, and the environment while ensuring everyone has access to the vital benefits of nature.



Rick Newton

# GOAL 1

## CLCC Advocacy in Action

From local land trust celebrations to lobbying in Hartford and at our nation's Capitol, CLCC's leadership, together with your dedication, ensures that land conservation funding is elevated and prioritized at every level. Protecting land—from our forests and wetlands to the mosaic of agricultural landscapes across our urban and rural spaces—is our responsibility for future generations.



**Amy Blaymore Paterson** advocating for the Community Investment Act.

### This Dedicated State Fund Works For Your Community

The Community Investment Act (CIA) provides dedicated funding for state land conservation, farmland preservation/dairy production, historic property, and affordable housing programs.

In 2024, CLCC led an effort to update the CIA website to capture its growing impact. The results are remarkable, with over \$259MM invested in 1900+ projects across the state. Check out the updates and find a project in your community at [www.communityinvestmentact.org](http://www.communityinvestmentact.org).

### Celebrating State Open Space (OSWA) and Community Garden (UGCG) Grants

CLCC was honored to join Governor Lamont and Commissioner Dykes in announcing \$14.5 million in state grants to aid in the purchase and protection of more than 2,626 acres of open space through 17 projects in 18 municipalities across Connecticut.

These grants mark the largest round of open space protection awards—by acreage protected and by dollars awarded—in more than a decade.



**Yaw Owusu Darko** speaking at the OSWA awards.



**LaSalette Community Gardens**





**“When I returned from Washington D.C., I found myself interested in land trusts — specifically Connecticut’s land trusts — in a deeper way. [T]he D.C. trip helped me to see new possibilities and see Avalonia in a new way.”**

**– Sharon Lynch**  
Avalonia Land Conservancy

### **Thanking Connecticut’s Congressional Delegation: 2024 Advocacy Days**

CLCC staff, alongside representatives from Avalonia Land Conservancy, Warren Land Trust, and the Land Trust Alliance, returned to Washington, D.C., to thank Connecticut’s Congressional Delegation for vital federal conservation programs and funding, including the 2024 Farm Bill.



### **Bush Hill Manchester Land Trust Conservation Conversation**

#### **Gathering for Conservation Conversations**

This year, we gathered at Manchester Land Conservation Trust’s Bush Hill Farm and the Cornwall Conservation Trust’s Furnace Brook Preserve to celebrate volunteers and recognize partnerships that leveraged state, federal, and other local investments in land conservation.

We were honored to have legislators, including Majority Leader Jason Rojas and Representatives Jason Douchette and Maria Horn, join us and the land trusts in these wonderful conservation conversations.

***Thank you for standing with us and empowering CLCC and Connecticut land trusts to champion these critical issues.***

## GOAL 2

# Build a strong, sustainable land conservation community with capacity to permanently conserve and steward natural and working lands

### 2024 Excellence in Conservation Organization Award – Traprock Ridge Land Conservancy

The Excellence in Conservation Organization Award recognizes organizations that have completed outstanding projects in the past year, showcasing creativity and meaningful progress in the field.

This year's award recognizes a successful 3-way merger that formed the Traprock Ridge Land Conservancy.

**"The formation of Traprock Ridge Land Conservancy will help the region better protect farmland, waterways, and wildlife habitat and promote outdoor recreation and education for the benefit of current and future generations."**

– Amanda Thompson, President, Traprock Ridge Land Conservancy



# Why Go It Alone? Collaboration and Partnerships Are On the Rise...

In the ever-evolving conservation landscape, CLCC is at the forefront—guiding and supporting land trusts. As conservation becomes more complex, strategic, and costly, many land trusts recognize the need for greater capacity to carry out their missions.

With hands-on technical assistance from CLCC, land trusts are pursuing mergers and collaborations as vital strategies for building this capacity.

As we celebrate the Traprock Ridge Land Conservancy's successful merger, CLCC is working with five additional cohorts of land trusts on their journey towards consolidation. CLCC also fosters innovative partnerships through regional gatherings, resource sharing, networking, and more.

The days of “going it alone” are fading as land trusts increasingly turn to collaboration. Through CLCC’s programming these partnerships are strengthening individual organizations and advancing the broader mission of land conservation in Connecticut.

Working together, Connecticut land trusts are creating more resilient and sustainable communities.



## GOAL 2

**“We’re grateful to CLCC and LTA for the incredible fundraising webinar and coaching with David Allen.**

**Working with David was a pleasure, and he helped take complex fundraising concepts and translate them into actionable steps, tailored to our land trust.**

**We are most grateful for this opportunity, which has expanded capacity for the work we all do together.”**

– Scott Peterson  
President, Middlesex Land Trust

## Building Capacity at All Scales

From statewide initiatives to one-on-one support, CLCC is dedicated to empowering Connecticut’s land trusts through comprehensive capacity-building programs. A wide range of initiatives ensure land trusts have the tools and knowledge to overcome challenges and seize opportunities.

### Statewide:

- The 40<sup>th</sup> Annual **Connecticut Land Conservation Conference** was the largest yet – bringing together close to 600 attendees for a full day of learning, connecting, and celebrating.
- A **four-part fundraising webinar** shared strategies and tools, followed by direct consulting assistance to equip land trusts to raise more money for conservation.
- **Peer networking programs** for land trust Presidents, Treasurers, Executive Directors, and Land Stewards created space for information sharing and connection building.
- Online info sessions shared intricacies and helpful tips about **State grant programs for conservation**, preparing land trusts to tap into these critical funding sources.

### Regional:

- Farmington River area land trusts gathered for a **succession planning workshop**, learning new tools to identify and onboard future leaders.
- In Lower Fairfield County, CLCC **convened land trusts** to discuss collaborative, innovative, and equitable approaches to high development pressures and limited open space.
- Climate smart land stewardship was the focus of a **field tour** in the Litchfield Hills, as land trusts saw firsthand how active land stewardship can create greater resilience in their woodlands.
- Land trust cohorts in the greater Waterbury area, Lower Connecticut River, and beyond joined CLCC at **regional roundtables** to find ways of sharing resources and working more collaboratively.

### One-on-One:

- **Visioning sessions** facilitated by CLCC staff supported individual land trusts as they embarked on strategic planning, worked through growing pains, and considered new opportunities.
- CLCC’s Climate Smart Land Stewardship Coordinator made **15 site visits**, helping land trusts conceptualize how climate adaptation and resilience could be integrated into their land stewardship programs.

# A Record-Breaking Gathering: The 40<sup>th</sup> Annual Connecticut Land Conservation Conference

The energy was palpable as new ideas and connections were sparked at CLCC's annual conference on March 23, 2024. This year's event had the largest turnout ever, with nearly 600 attendees braving a torrential downpour to learn, network, and inspire. Participants delved into topics from fundraising and community engagement to climate resilience and effective lobbying.

Keynote speaker Dr. Bronson Griscom, a renowned scientist and thought leader on natural climate solutions, illustrated the power of natural systems to combat climate change and emphasized the critical role that land conservation and stewardship play in our collective future.

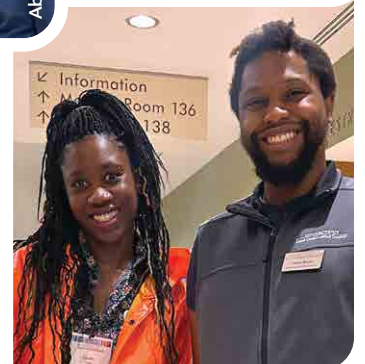
These concepts were further emphasized by an esteemed panel of Connecticut practitioners, scientists, and community leaders — each sharing their perspective on the different approaches and strategies to implementing these concepts.

The conference underscored our shared commitment to accelerating land conservation, strengthening land trusts, and engaging people from all walks of life.

**"I have already told a lot of people about how amazing the conference was, but sufficient words and superlatives elude me. What amazing energy, ideas, and people.**

**I especially enjoyed and valued the workshops on Indigenous perspectives and the youth panel. There just might be hope for the future after all."**

**– David Sutherland**  
Equity Trainer & Facilitator



**600 Attendees • 111 Faculty • 75 Land Trusts • 36 Exhibitors • 55 Gal. of Coffee • 3" of Rain**

## GOAL 3

# Enhance Permanence of Protected Lands

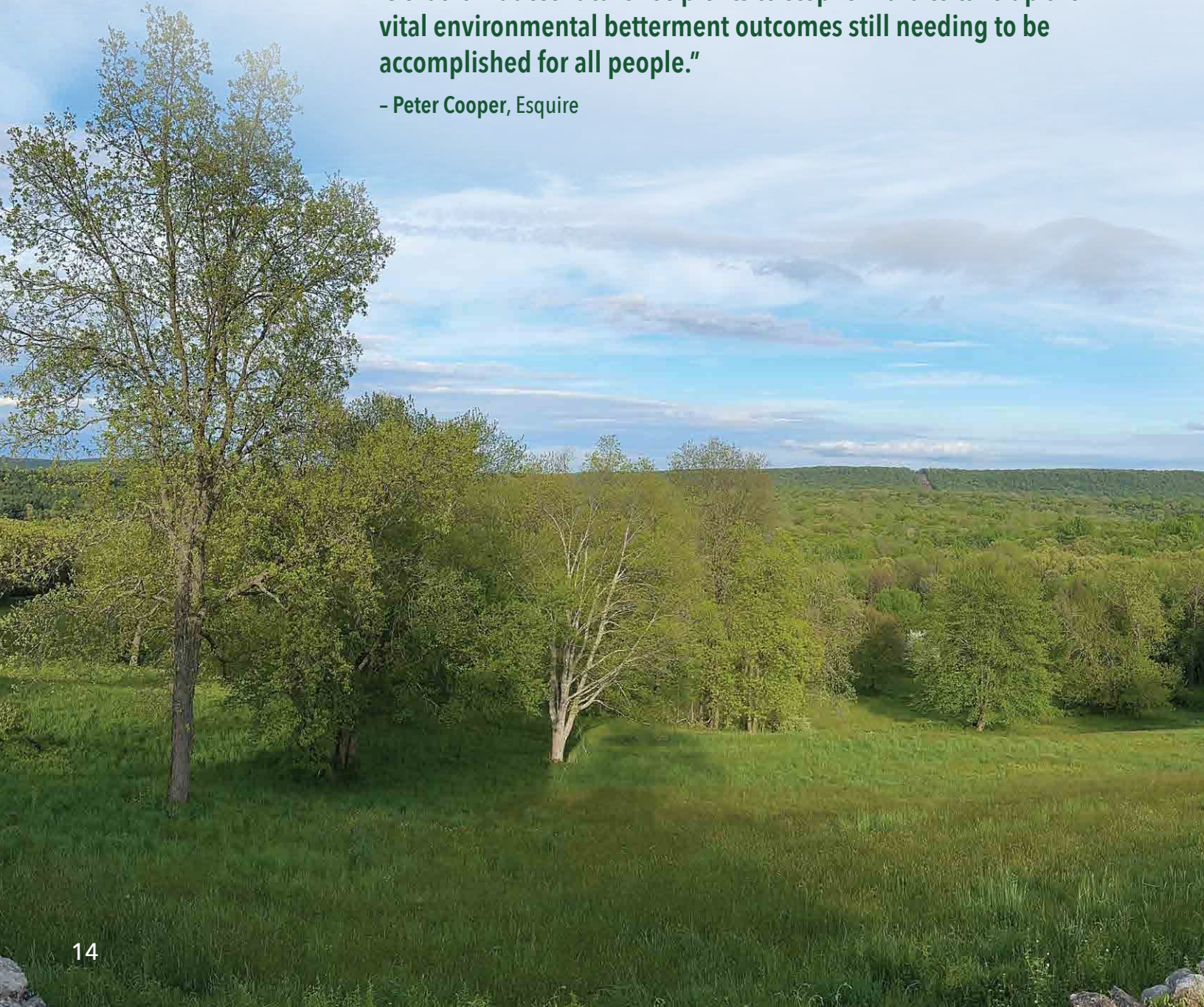


### 2024 Peter B. Cooper Award for Excellence in Conservation Law – Peter B. Cooper

The inaugural Peter B. Cooper Award for Excellence in Conservation Law honors outstanding achievements in legal efforts that protect and promote conservation initiatives vital to preserving our natural resources.

**“What pleases me most about this excellent award is that it looks both back and forward. In my view, inherent as part of this award is that it induces future recipients to step forward to take up the vital environmental betterment outcomes still needing to be accomplished for all people.”**

– Peter Cooper, Esquire



# Empowering Land Trusts Through Climate-Smart Solutions

At CLCC, we believe in the power of local action to address the impacts of climate change. In 2024, we were privileged to channel more than \$150,000 in critical funding to nine land stewardship projects across the state. These funds will connect land stewards with the resources and professionals they need to implement meaningful, nature-based climate solutions.

## Resilience in the Woods

With a \$45,000 grant from CLCC, the East Haddam Land Trust is building forest resilience at their Miller Farm Preserve. Volunteers and foresters will work together to create clearings that enhance structural diversity, provide essential wildlife habitat, and fortify the forest against pests, disease, and extreme weather. It's an excellent example of how climate-smart stewardship can ensure the long-term health of our forests.

## Farms for the Future

Similarly, the Great Meadow Conservation Trust received nearly \$15,000 from CLCC to bolster ongoing efforts at their Wood Parcel in Wethersfield. This project will help adapt a working agricultural field to new climatic conditions by treating invasive species, planting native cover crops to reduce erosion, and introducing climate-adapted tree species and native plants. The impact of this work extends beyond the land itself by including community involvement and education.

*Funding for this grant program was paid for by the Climate Smart Farming: Agriculture and Forestry Grant. Funding is awarded and administered by the Connecticut Department of Agriculture.*

## Incorporating Indigenous Knowledge into Land Stewardship

CLCC is proud to award funding to Avalonia Land Conservancy for the Pike Marshall Forest Management Plan.

This initiative, guided by expert foresters and Tribal Resource Specialists, blends Indigenous knowledge with strategies for climate resilience and adaptation.

Avalonia's growing partnership with the Mashantucket Pequots sets a vital precedent for future collaborations between Connecticut's land conservation and Indigenous communities.



## GOAL 4

# Integrate diversity, equity, inclusivity, and environmental justice into all aspects of land conservation

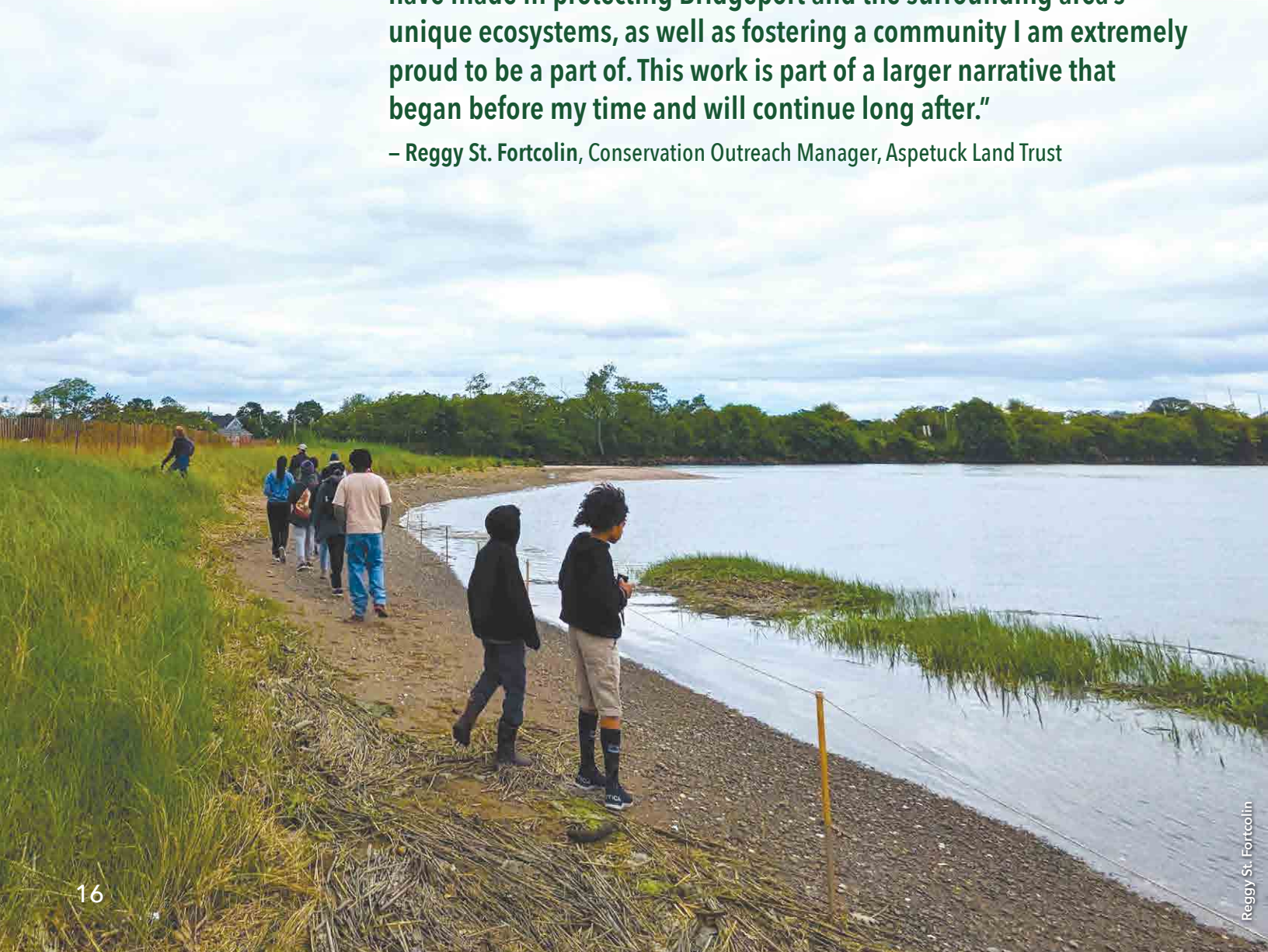


### 2024 Excellence in Community Engagement Award – Aspetuck Land Trust with special recognition of Reggy St. Fortcolin

The Excellence in Community Engagement Award recognizes land trust connections to local communities, the region, and wider society, celebrating how partnerships and collaborative relationships address community needs and connect more people to the land, and each other.

**“Reflecting on my tenure, I am particularly proud of the strides we have made in protecting Bridgeport and the surrounding area’s unique ecosystems, as well as fostering a community I am extremely proud to be a part of. This work is part of a larger narrative that began before my time and will continue long after.”**

– Reggy St. Fortcolin, Conservation Outreach Manager, Aspetuck Land Trust







Reggy St. Fortcollin

## Access for All: Bridging Communities and Nature

Conservation is most powerful when it is woven into the fabric of our communities. CLCC envision a future where everyone—regardless of background—has the opportunity to connect with the natural world, experience its beauty, and become a steward of the land.

By centering our efforts on the needs and voices of communities, we're nurturing relationships and creating pathways for more people to experience the transformative power of the outdoors.

### Convening Conversation: Sharing Knowledge, Strengthening Conservation

One of the most meaningful ways CLCC builds these connections is by bringing people together. In Lower Fairfield County, we convened a workshop that united land trusts experiencing the unique pressures of working in high-development areas. It was a space where stories were shared, challenges were understood, and solutions were born.

### Generating Resources: Championing Equity in Farmland Access

CLCC's commitment to equity extends to the farmlands that nourish our communities. In partnership with the Connecticut Department of Agriculture, we developed the *Farmland Access & Ownership* report, which sheds light on the barriers underserved farmers face in securing land.

This report is a catalyst for change—offering data-driven insights and actionable recommendations for policymakers, land trusts, and farmers to create more inclusive opportunities in agriculture.

### Increasing Access: Fostering Belonging in Nature

Through our Bird & Hike program, CLCC partners with local land trusts to offer guided outdoor experiences to underserved communities. Each hike is a step toward a more inclusive conservation movement, where everyone has the chance to find solace, inspiration, and purpose in nature.

This commitment to community-centered conservation expands our reach and empowers new champions of conservation—laying the foundation for a more just, equitable, and sustainable future for all.



Reggy St. Fortcollin



Ashley Stewart



## GOAL 4

**"With growing access to limited resources and available land for the myriad of land uses required for sustaining Connecticut communities, organizations such as the Connecticut Land Conservation Council (CLCC) are working to help land trust members and local planners examine the potential for creative thinking and understanding about the intersect of land resources and land use in Connecticut."**

### ***– Connecticut Planning***

A publication of the Connecticut Chapter of the American Planning Association Winter Edition

## Reflections from Summit on Land Use in Connecticut

Early in 2024, CLCC hosted our 3rd Annual Winter Summit, "Land Use in Connecticut: Connecting Grasstops to Grassroots." This summit provided a platform for land trusts to explore strategic land use planning and policies through collaborative discussions with state, regional, and local leaders.

The 'Grasstops' panel, featuring esteemed state agency leaders, shared insights on coordinating programs for land conservation, affordable housing, farmland access, and other land uses. The 'Grassroots' panel included regional and local government entities, non-profits, and community organizations, examining land use through their evolving perspectives.



### **Grasstops Panel**

(From left) Bryan Hurlburt, Commissioner, Department of Agriculture; Katie Dykes, Commissioner, Department of Energy and Environmental Protection; Amy Blaymore Paterson, Executive Director, CLCC; Seila Mosquera-Bruno, Commissioner, Department of Housing; Moderator John Guskowski, Co-Founder & Principal, Tyche Planning & Policy Group; Binu Chandy, Director, Office of Brownfield Remediation & Development for the Department of Economic and Community Development; Rebecca Augur, Responsible Growth Coordinator, Office of Policy and Management; Aaron Lefland, Deputy Director, CLCC; and Jovan Bryan, Community Conservation Coordinator, CLCC.



Audience members actively engaged in an open forum, discussing capacity building, policy updates, and enhancing the connection between state and local land use initiatives. At CLCC, we know that the challenge of building community is learning to hear every voice in the room and unite them toward common ground and understanding.

We are committed to encouraging more of these discussions and leveraging our unique position as a statewide organization to foster these essential conversations and unite diverse voices to promote community and land stewardship across Connecticut.



### Grassroots panel at the 2024 Winter Summit

(From left) Moderator Ashley Stewart, Principle, Stewart Environmental and Equity Consulting; Mirna Martinez, Executive Director, Southeastern Connecticut Community Land Trust; Connie Manes, Director, Litchfield Hills Greenprint Collaborative; Tyra Penn-Gesek, Director, Planning & Development for the Town of Thompson; Francis Pickering, Executive Director, Western Connecticut Council of Governments; Kaleb Garrett, Founder, The Circle; and Jonathon Savage, Executive Director, Gather New Haven.



## GOAL 5

# Strengthen CLCC's organizational capacity and sustainability to lead the land conservation community in Connecticut



Mark Lifflander

### 2024 Conservation Hero Award – Hiram Williams

The Conservation Hero Award honors individuals or organizations for exceptional leadership in preserving Connecticut's natural treasures, celebrating their impactful contributions to protecting the state's landscapes and ecosystems while inspiring future generations to embrace environmental stewardship.

**"I grew up on a farm and spending time outdoors was a daily event for me, almost as much a part of my life as going to school. I always took it for granted that other people lived that way, that they took comfort in the woods and wildlife.**

**Later in life, I realized that many people did not have the same opportunities to be out on the land. Serving on the NCLC Board allows me to ensure that everyone enjoys the benefits of nature."**

**- Hiram Williams, Board Member, Northwest Connecticut Land Conservancy**

# A Groundbreaking Census of Connecticut Land Trusts

This year, CLCC proudly released the results of the first-ever census of Connecticut land trusts. This groundbreaking project provides important insights and helps to set new benchmarks for conservation efforts statewide. It also achieved several key objectives:

## Quantifying Conservation

For the first time, we have quantified the pace and scale of land conservation across Connecticut, providing a clear picture of our collective impact.

## Understanding Priorities

We gained valuable insights into land trusts' priorities, how conservation efforts benefit communities, and how priorities change with time.

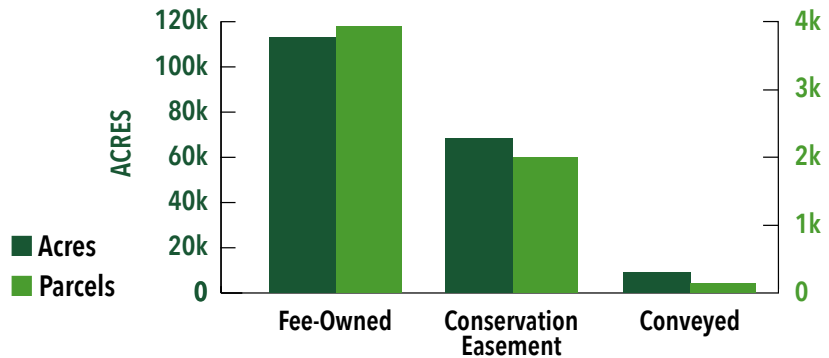
## Support and Collaboration

The data revealed new ways for CLCC to support land trusts through informed policy, grant programs, workshops, technical assistance, and more.

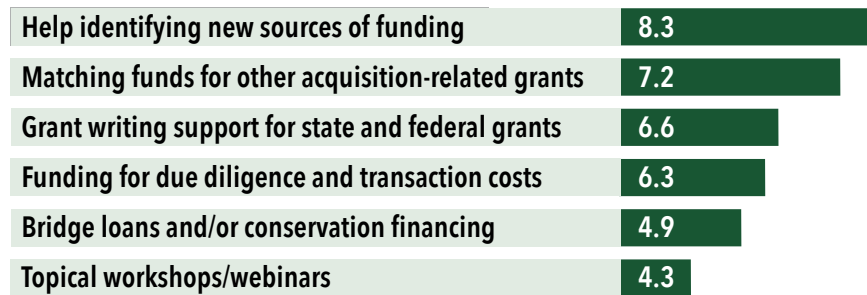
With continued collaboration, including a partnership with Yale School of the Environment, we aim to explore this comprehensive and insightful data further, helping to pave the way for a resilient and thriving natural landscape in Connecticut.

**For more information about the census, including a copy of the recently released report, please visit [ctconservation.org/publications](https://ctconservation.org/publications)**

## Conservation Success



## Support Needed for Land Acquisition (Maximum score = 10)



## Meeting Land Trust Needs

In response to a clear need for new funding sources, CLCC will launch a new Land Capital Grants program in 2025 and is actively exploring other opportunities to finance land conservation and stewardship.

# GOAL 5

## Financials and Giving

### 2023 FINANCIALS



#### 2023 Operating Income

Municipal Commission	\$ 2,098
Land Trust Memberships	\$ 13,768
Corporations/Organizations	\$ 14,046
Investment Income	\$ 29,591
Program Revenue	\$ 34,834
Government	\$ 51,968
Foundations	\$ 68,513
Conference	\$ 75,206
Individual Donations/Gifts	\$192,596
Foundation Grants*	\$486,214
<b>Total</b>	<b>\$968,834</b>

\*Includes multi-year grants that will be spent down in 2024



#### 2023 Operating Expenses

Fundraising	\$ 82,087
Management & Support	\$212,612
Programs (Incl. Conference)	\$533,210
<b>Total</b>	<b>\$827,909</b>

For a full financial statement visit [www.ctconservation.org](http://www.ctconservation.org)

This past year, CLCC has seen significant developments in many areas of our work as we've undertaken initiatives to bolster our resources, expertise, and collaborations. This has been done to better equip ourselves to support land trusts with the technical and financial resources they need to navigate the dynamic challenges of land conservation.

Through the invaluable support of land trusts, municipalities, foundations, state and federal partners, and YOUR steadfast dedication, we stand fervid to support Connecticut's land trusts at a pivotal time for our environment.

#### Every Gift Matters

All gifts to CLCC help us increase our impact. Together, we can conserve more land and ensure an increasingly diverse array of people are connected to the wonders of our natural world, fostering a sense of stewardship that goes beyond each land trust preserve. Your gift holds immense value and is deeply appreciated.

#### What Will Your Conservation Legacy Be?

Planned gifts are one of the best, most effective ways to have a lasting conservation impact. There is no minimum age or gift amount required to create a conservation legacy, just a desire to create a greener, healthier Connecticut for future generations.

By remembering CLCC in your estate plans you join others who share a similar passion for natural solutions to urgent climate challenges.

CLCC is committed to partnering with you to help Connecticut's land trusts conserve more land and ensure it remains protected forever. Your thoughtful estate planning enables you to provide for your loved ones and for the special places and organizations that you value the most right now.

**For more information about how to make an immediate, recurring or planned gift, act now by visiting [ctconservation.org](http://ctconservation.org).**



Gwen Marrison



Sue Cope

## New Leadership at CLCC

In 2024, CLCC announced Gwen Marrison as CLCC's new Board Chair and Sue Cope as Vice-Chair, succeeding Elisabeth Moore, who led the Board for two years.

Their dedication will guide our efforts forward. Join us in welcoming them and thanking Elisabeth for her tremendous leadership as we continue to elevate land conservation in Connecticut.



deKoven House  
27 Washington Street #12  
Middletown, CT 06457

[ctconservation.org](http://ctconservation.org)  
860-852-5512

Nonprofit Org.  
U.S. Postage  
**PAID**  
Middletown, CT  
Permit #53

## Officers & Board of Directors

Gwen Marrion  
*Chair*  
Bolton

Sue Cope  
*Vice-Chair*  
Simsbury

Eric Hammerling  
*Secretary*  
West Hartford

Richard Newton  
*Treasurer*  
Mystic

Mandi Careathers  
Bloomfield

Akiebia Hicks  
West Hartford

Doris Johnson  
Windsor

Bill Kraekel  
Easton

Eric Lindquist  
Griswold

Elisabeth Moore  
New Haven

Rebecca Neary  
Warren

Catherine Rawson  
New Preston

Jonelle Reynolds  
Coventry

## Staff

Amy Blaymore Paterson  
*Executive Director*

Ricky Bentley  
*Climate Smart Stewardship Coordinator*

Jovan Bryan  
*Community Conservation Coordinator*

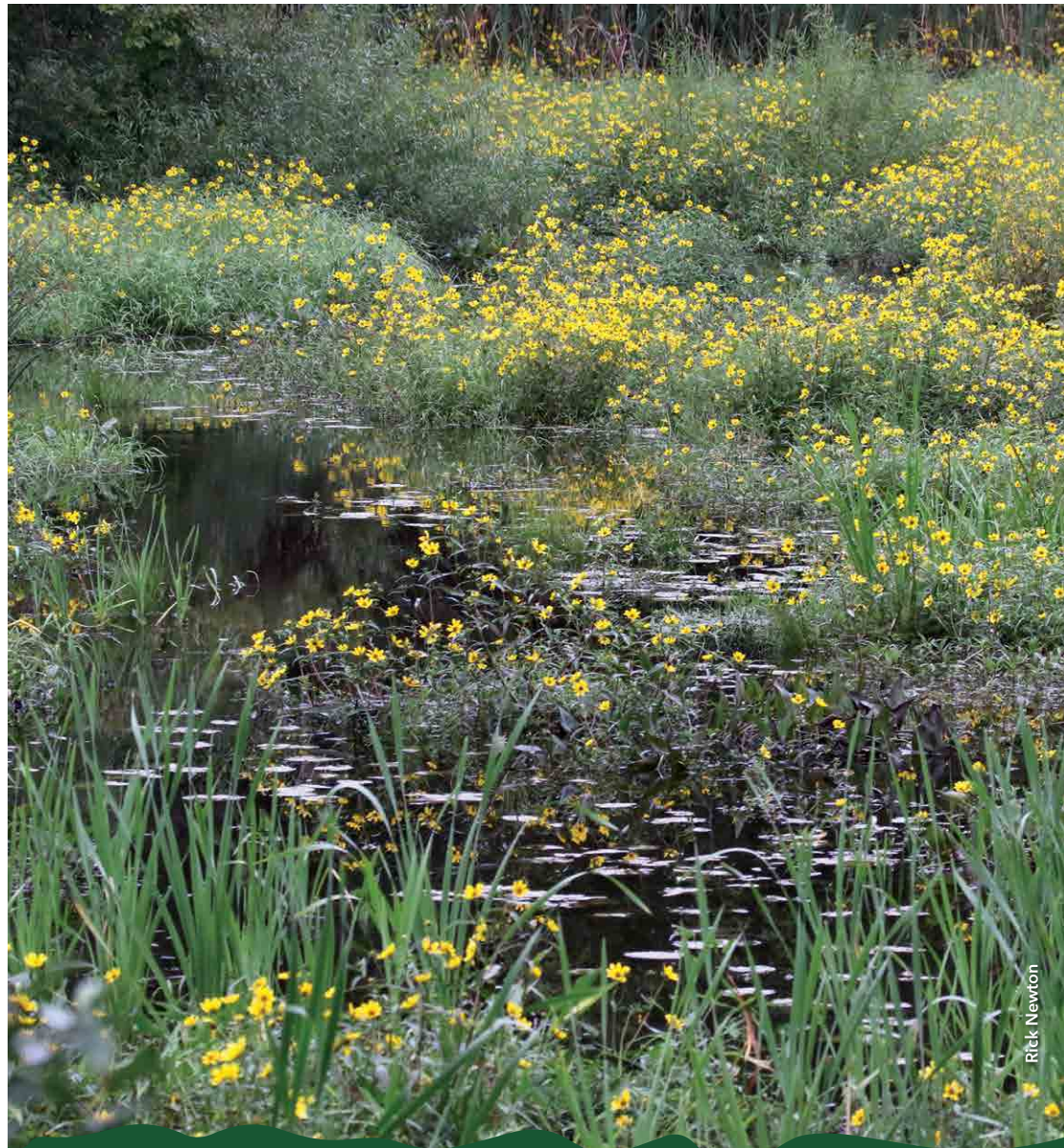
Yaw Owusu Darko  
*Senior Project Specialist*

Cristina Gastador Hayden  
*Operations Manager*

Victoria Jaskaran  
*Sandy Breslin Conservation Fellow  
(2023-24)*

Aaron Lefland  
*Deputy Director*

Kathleen Lowe  
*Communications Manager*



Rick Newton

**SAVE THE DATE** Connecticut Land Conservation Conference  
**March 22, 2025 Wesleyan University**