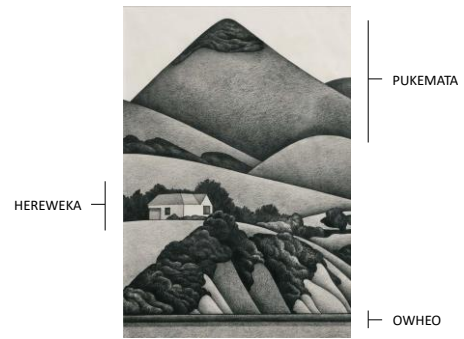


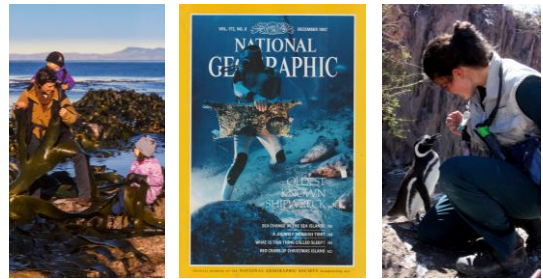
1



2



3



4



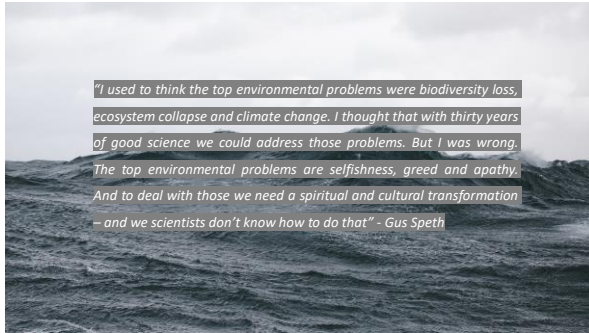
5

1.
Foster emotional connections between individuals and our environment in the hope of developing a holistic sense of kaitiakitanga (guardianship) amongst us all in the face of climate change.



2.
Use my knowledge as a veterinarian to assist in mitigating the biodiversity crisis - to see our islands and surrounding ocean return to their once wild status.

6



7



8

*Nā tō rourou, nā
taku rourou ka
ora ai te iwi*

*With your food
basket and my
food basket the
people will thrive*

WHAT CAUSES MY GREEN ANGST:

CLIMATE CHANGE IS HERE... RIGHT NOW.

9

THE STATISTICS :

Climate Change in the American Mind: Beliefs & Attitudes,
December 2022 – Yale Program on Climate Change
Communication

- Americans who think climate change is happening outnumber those who don't by a ratio of more than 4:1
- 1 in 10 Americans have considered moving to avoid the impacts of climate change
- 1 in 10 Americans report experiencing symptoms of anxiety due to climate change within the past two weeks and resultant symptoms of depression
- 1 in 4 Americans say they try not to think about Climate Change
- 61% of Americans disagree that it is too late to do anything

10

HOW IS CLIMATE CHANGE IMPACTING OUR PLANET?

11



12



13



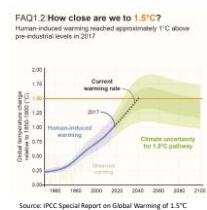
14



15

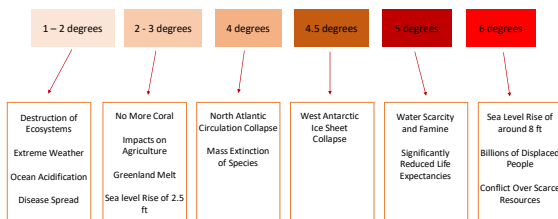
THE TIMELINE OF DAMAGE...

- 0.75 degree rise by the end of the 20th century
- By the end of the 21st century, we can expect a rise anywhere between 1.1 degrees and 6.4 degrees
- 2019 = surpassed 1.1 degrees – warmest it has been in 11,000 years
- Has taken 240 years to get to 0.75 degrees above pre-industrial levels
- In the past 19 years it risen another 0.35 degrees!!!



16

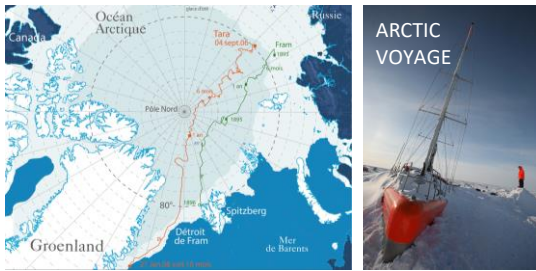
1.5 DEGREES BELOW PREINDUSTRIAL LEVEL THRESHOLD - WHAT DOES IT MEAN?



17



18



19



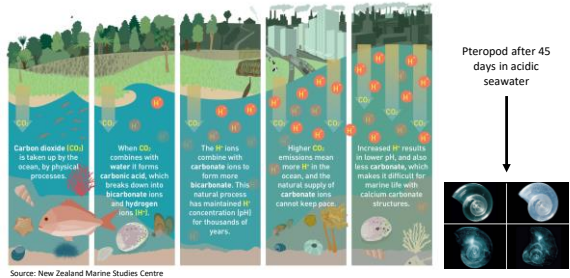
20

THE EFFECT OF A WARMING OCEAN...



21

WHAT IS OCEAN ACIDIFICATION?

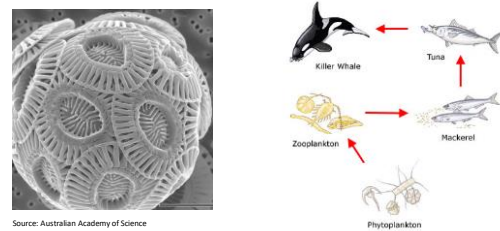


22



23

THE IMPORTANCE OF PLANKTON...



24



25



26

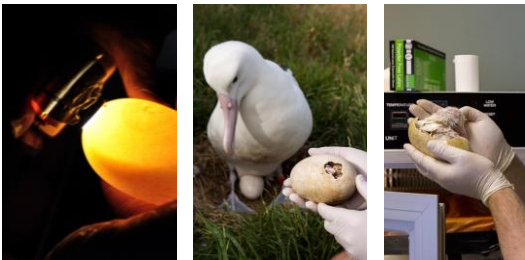
LEARNINGS...

- The extent of coral bleaching reached 30% to 50% at some islands of the Tuamotu Archipelago in Polynesia
- As much as 90% of Samoan corals were dead
- Some of the reefs of Tuvalu and Kiribati were completely wiped out
- Decrease in ocean pH by 26% since the start of the industrial revolution
- Siberian volcanoes 252 million years ago caused an ocean acidification event = greatest ever mass extinction of life on the planet
- Ocean can cope with a drop of pH of 0.1 however if it continues on its current path to 0.7 prepare for similar results

27



28



29



30

A TEMPORARY FIX...



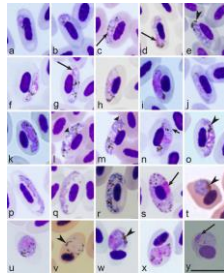
31



32

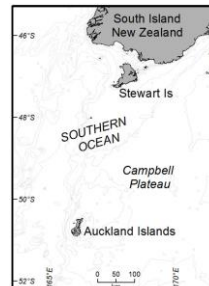


Source: Department of Conservation



Source: Malaria Journal

33



Source: MPI



34



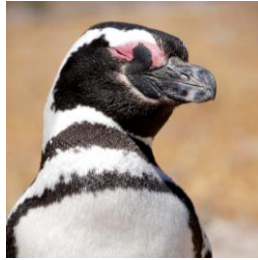
35



36



Source: The Auk Journal



37



38



Source: NASA Earth Observatory



Source: Science Learning Hub



39



40

WHAT'S HOLDING US BACK??

- Global inequality - by addressing climate change we are forced to tackle poverty
- Long term problem – death of political campaigns
- Lack of global leadership at all levels
- Today = 1% of world GDP, by the end of the 21st century = 20% of world GDP

41



WHAT IF THE GLOBAL RESPONSE TO CLIMATE CRISIS MATCHED THE GLOBAL RESPONSE TO CORONA VIRUS?

Source: Inspiring Stories

42

WHAT CAUSES MY GREEN ANGST:

THE SIXTH MASS EXTINCTION IS UPON US...

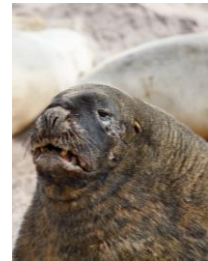
THE FACTS...

- As many as 1 million species are at risk of extinction in coming decades.
- 6th mass extinction on planet but 1st caused by humans.
- The number of vertebrates that have gone extinct over the last 100 years should have taken 800 - 10,000 years
- Not a single taxa is not at risk of extinction
- Amphibians are in the most trouble, with over 40% of species threatened
- Many extinctions in the ocean are going unseen

43

44

CASE STUDY: RĀPOKA



45

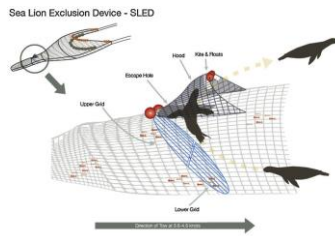
46



47



48



Source: The Department of the Environment

49

CASE STUDY: TAIAROA HEAD



Source: Predator Free New Zealand

50



Source: Department of Conservation

51



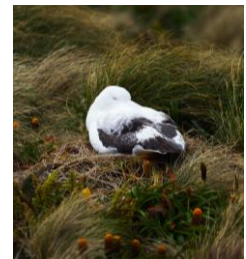
Source: New Zealand Geographic



52



53



54



Source: Department of Conservation

55



56



57



Source: National Geographic

58



Source: BirdLife International

59

HOW TO STARVE TO DEATH ON A FULL STOMACH...



Source: Greenpeace

60

*Toitū te marae a Tāne Toitū te marae a Tangaroa
Toitū te tangata*

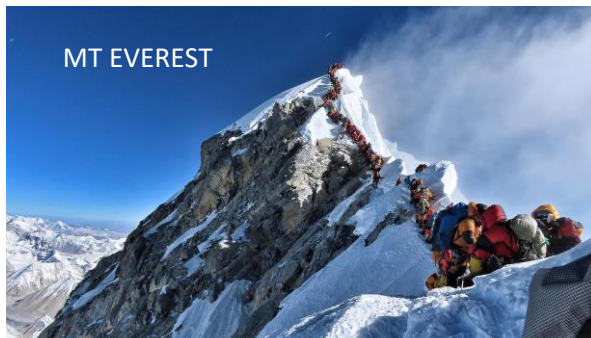
*When the realm of Tāne and the domain of Tangaroa
are sustained, so too are people*

WHAT CAUSES MY GREEN ANGST:

THE LAST REMAINING WILD CORNERS OF OUR
WORLD ARE DISAPPEARING...

61

62



MT EVEREST

63



BORNEO

64



SOUTH AFRICA

65

IN NEW ZEALAND?

66



67



68

THE KEY DIFFERENCE?

69



70



SUB-ANTARCTICS

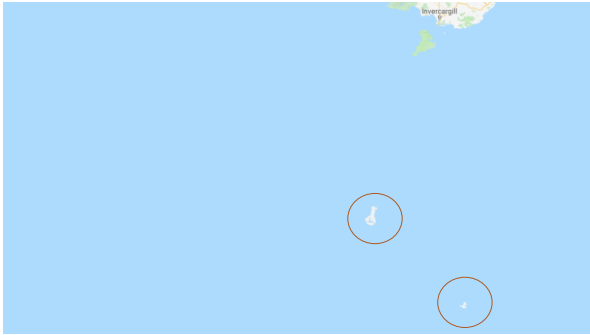


71



MY LOVE AFFAIR WITH
THE SUB-ANTARCTICS...

72



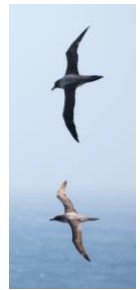
73



74



75



76

EXAMPLES ON THE MAINLAND?

77



ECOSANCTUARIES

78



79



80



81



82

HOW DOES ALL THIS APPLY TO YOU?

83

THE IMPORTANCE OF LAND TRUSTS...



- Advocacy
- Demand change at the local / state / national level
- Prioritization of carbon sequestration
- Wildlife protection
- Recreational access
- Protection from exploitation

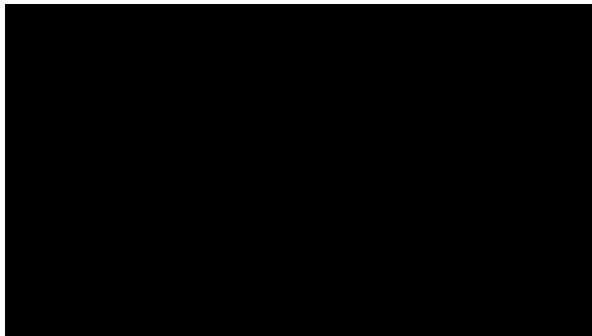
84



85

1. CREATE EMOTIONAL CONNECTIONS

86



87

2. TAKE THE TIME TO LEARN FROM INDIGENOUS

88



89

3. LIVE BY KAITIAKITANGA

90



91

4. TRUST IN AND UPHOLD SCIENCE

92

5. EDUCATE AND EMPOWER

93



94

6. NURTURE WILD SPACES

95

7. WHEN THE GREEN ANGST BECOMES TOO MUCH, REMEMBER KOTAHITANGA

96



97